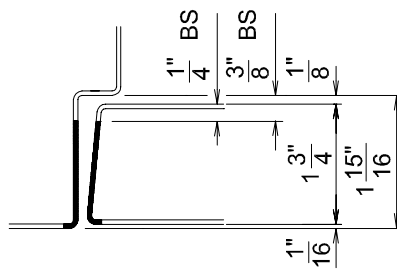
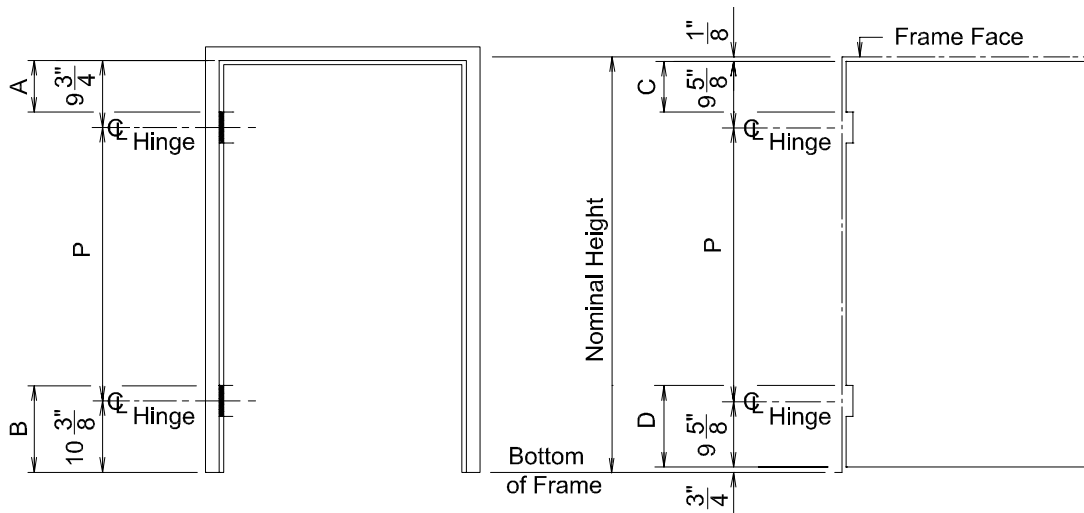


Doors and Frames up to (and Including) 5'0" Nominal Height

1 Pair of Hinges

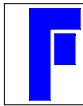


Hinge Backsets

Hinge Height	Frame		Door	
	A	B	C	D
4"	7 ³ / ₄ "	12 ³ / ₈ "	7 ⁵ / ₈ "	11 ⁵ / ₈ "
4 ¹ / ₂ "	7 ¹ / ₂ "	12 ⁵ / ₈ "	7 ³ / ₈ "	11 ⁷ / ₈ "
5"	7 ¹ / ₄ "	12 ⁷ / ₈ "	7 ¹ / ₈ "	12 ¹ / ₈ "

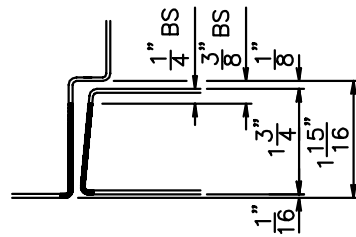
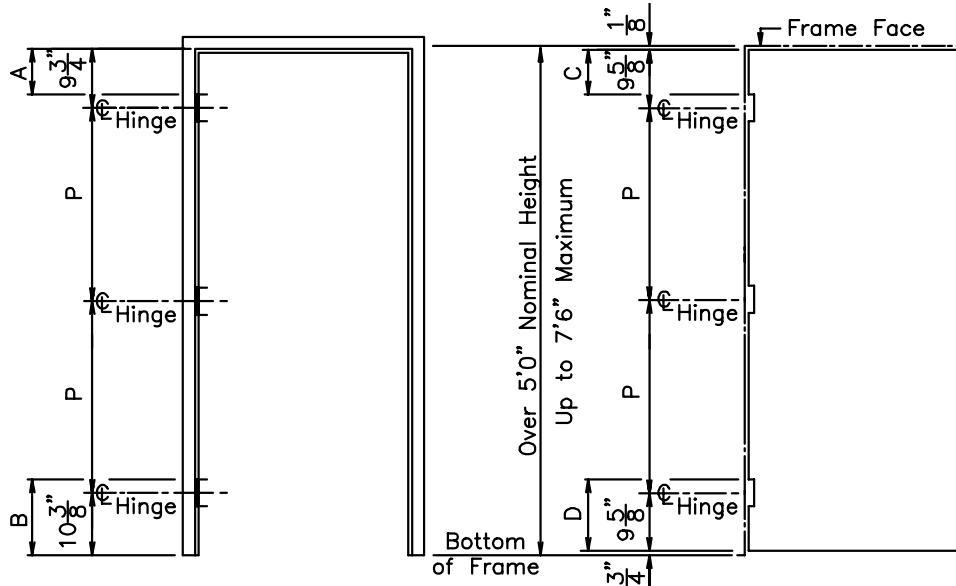
Nominal Height	P (Pitch)
3'6" (42")	21 ⁷ / ₈ "
3'8" (44")	23 ⁷ / ₈ "
3'10" (46")	25 ⁷ / ₈ "
4'0" (48")	27 ⁷ / ₈ "
4'2" (50")	29 ⁷ / ₈ "
4'4" (52")	31 ⁷ / ₈ "
4'6" (54")	33 ⁷ / ₈ "
4'8" (56")	35 ⁷ / ₈ "
4'10" (58")	37 ⁷ / ₈ "
5'0" (60")	39 ⁷ / ₈ "

Note: Top and bottom hinge centerlines shown are used for all non-standard imperial heights



1-3/4" Thick Doors and Frames Over 5'0" up to (and Including) 7'6" Nominal Height

1-1/2 Pairs of Hinges



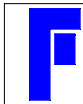
Hinge Backsets

* : Indicates 'Standard' Size

Hinge Height	Frame		Door	
	A	B	C	D
4"	7 3/4"	12 3/8"	7 5/8"	11 5/8"
* 4 1/2"	7 1/2"	12 5/8"	7 3/8"	11 7/8"
5"	7 1/4"	12 7/8"	7 1/8"	12 1/8"

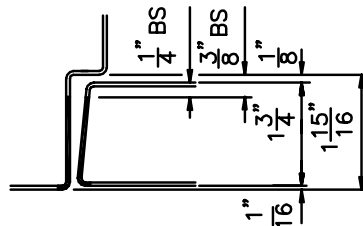
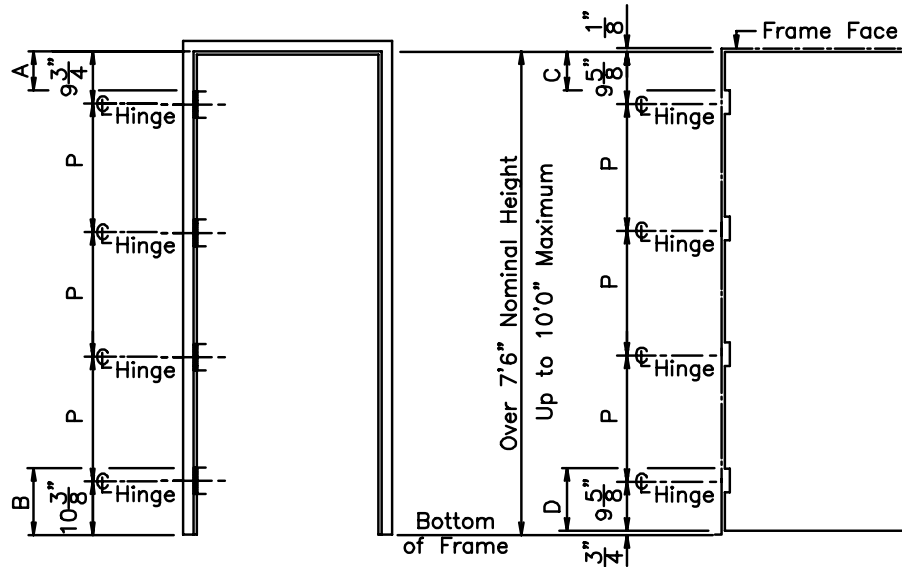
Nominal Height	P (Pitch)
5'2" (62")	20 15/16"
5'4" (64")	21 15/16"
5'6" (66")	22 15/16"
5'8" (68")	23 15/16"
5'10" (70")	24 15/16"
6'0" (72")	25 15/16"
6'2" (74")	26 15/16"
6'4" (76")	27 15/16"
6'6" (78")	28 15/16"
* 6'8" (80")	29 15/16"
* 6'10" (82")	30 15/16"
* 7'0" (84")	31 15/16"
* 7'2" (86")	32 15/16"
* 7'4" (88")	33 15/16"
* 7'6" (90")	34 15/16"

Note: Top and bottom hinge centerlines shown are used for all non-standard imperial heights



Doors and Frames Over 7'6" up to (and Including) 10'0" Nominal Height

2 Pairs of Hinges



Hinge Backsets

* : Indicates 'Standard' Size

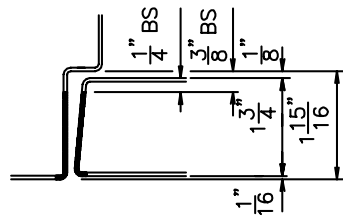
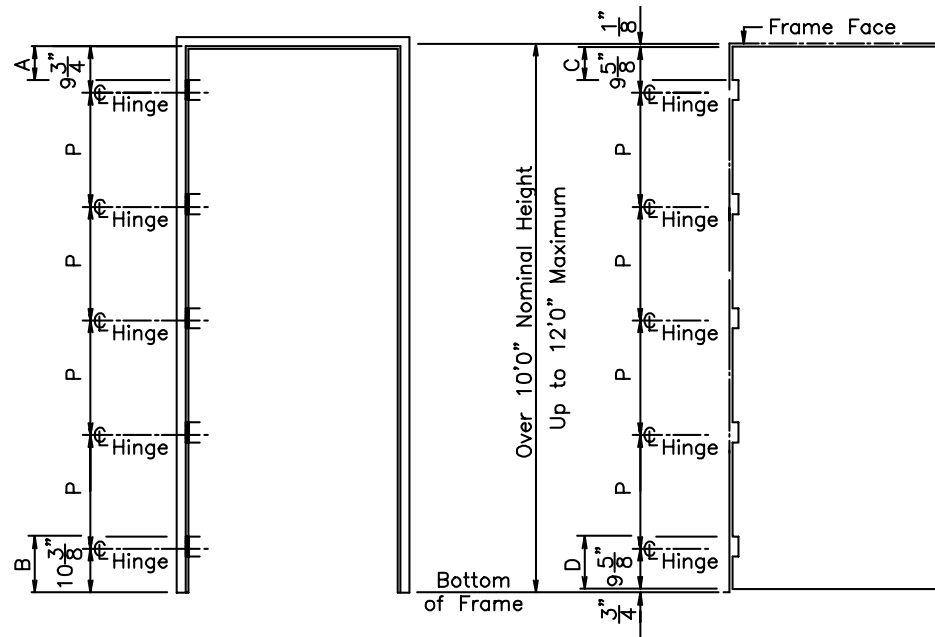
Hinge Height	Frame		Door	
	A	B	C	D
* 4 1/2"	7 1/2"	12 5/8"	7 3/8"	11 7/8"
5"	7 1/4"	12 7/8"	7 1/8"	12 1/8"

Nominal Height	P (Pitch)
7'8" (92")	23 61/64"
7'10" (94")	24 5/8"
* 8'0" (96")	25 19/64"
8'2" (98")	25 61/64"
8'4" (100")	26 5/8"
8'6" (102")	27 19/64"
8'8" (104")	27 61/64"
8'10" (106")	28 5/8"
* 9'0" (108")	29 19/64"
9'2" (110")	29 61/64"
9'4" (112")	30 5/8"
* 9'6" (114")	31 19/64"
9'8" (116")	31 61/64"
9'10" (118")	32 5/8"
* 10'0" (120")	33 19/64"

Note: Top and bottom hinge centerlines shown are used for all non-standard heights

Doors and Frames Over 10'0" up to (and Including) 12'0" Nominal Height

2-1/2 Pairs of Hinges

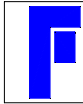


Hinge Backsets

Hinge Height	Frame		Door	
	A	F	G	M
4 1/2"	7 1/2"	12 5/8"	7 3/8"	11 7/8"
5"	7 1/4"	12 7/8"	7 1/8"	12 1/8"

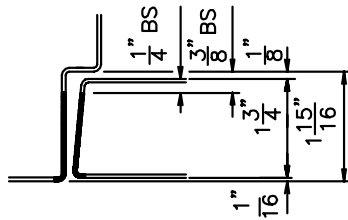
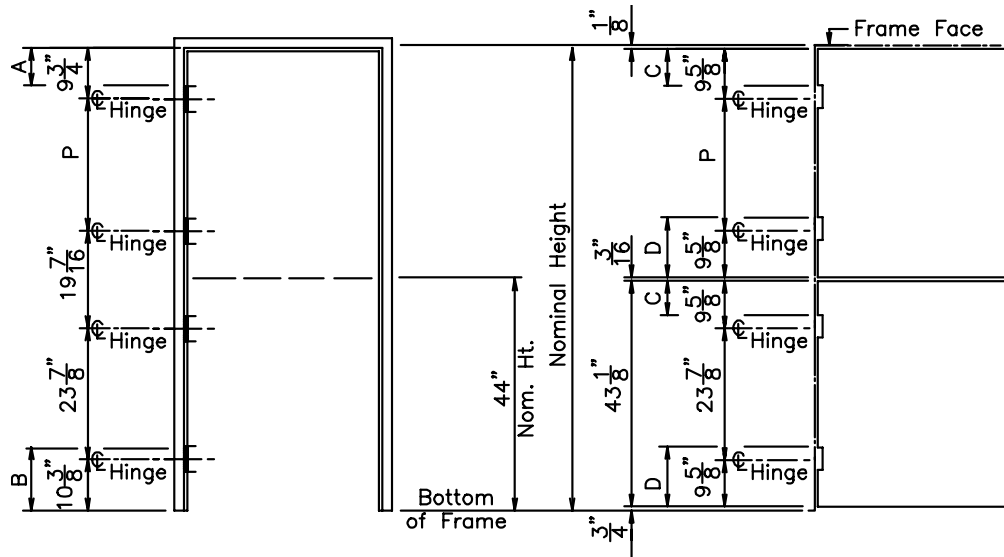
Note: Top and bottom hinge centerlines shown are used for all non-standard imperial heights

Nominal Height	P (Pitch)
10'2" (122")	25 15/32"
10'4" (124")	25 31/32"
10'6" (126")	26 15/32"
10'8" (128")	26 31/32"
10'10" (130")	27 15/32"
11'0" (132")	27 31/32"
11'2" (134")	28 15/32"
11'4" (136")	28 31/32"
11'6" (138")	29 15/32"
11'8" (140")	29 31/32"
11'10" (142")	30 15/32"
12'0" (144")	30 31/32"

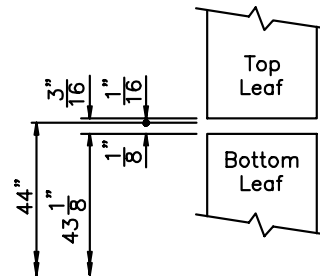


Dutch Doors and Frames up to (and Including) 7'6" Nominal Height

2 Pairs of Hinges



Hinge Backsets

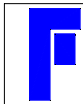


Note: Top, bottom, 19-7/16" and 23-7/8" hinge centerlines are used for all non-standard imperial heights.

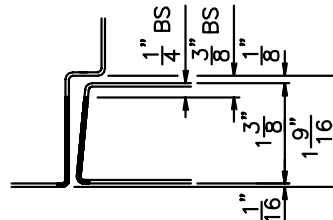
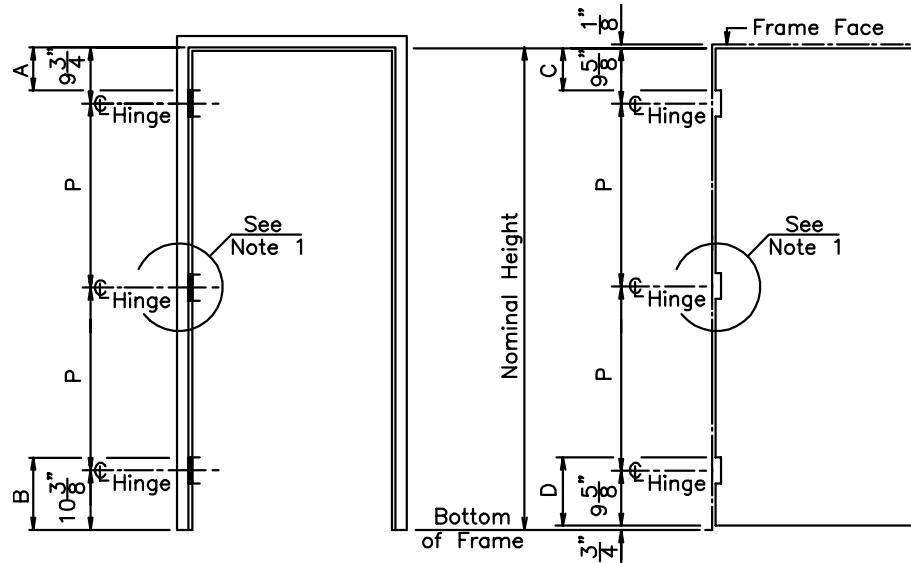
Nominal 44" bottom leaf height is used as the standard for all imperial dutch doors

Hinge Height	Frame		Door	
	A	B	C	D
4"	7 3/4"	12 3/8"	7 5/8"	11 5/8"
4 1/2"	7 1/2"	12 5/8"	7 3/8"	11 7/8"
5"	7 1/4"	12 7/8"	7 1/8"	12 1/8"

Nominal Height	P (Pitch)
6'8" (80")	16 9/16"
6'10" (82")	18 9/16"
7'0" (84")	20 9/16"
7'2" (86")	22 9/16"
7'6" (90")	26 9/16"



1-3/8" Thick Doors and Frames 6'8" to 7'2" Nominal Height



Hinge Backsets

* : Indicates 'Standard' Size

Hinge Height	Frame		Door	
	A	B	C	D
* 3 1/2"	8"	12 1/8"	7 7/8"	11 3/8"
4"	7 3/4"	12 3/8"	7 5/8"	11 5/8"
4 1/2"	7 1/2"	12 5/8"	7 3/8"	11 7/8"

Nominal Height	P (Pitch)
6'8" (80")	59 7/8"
6'10" (82")	30 15/16"
7'0" (84")	31 15/16"
7'2" (86")	32 15/16"

Note 1

- : 6'8" door and frame product prepared for 1 pair of 3-1/2" hinges
- : 6'10", 7'0" and 7'2" door and frame product prepared for 1-1/2 pairs of 3-1/2" hinges
- : When 4" or 4-1/2" height hinges are specified, 6'8" through 7'2" product prepared for 1-1/2 pairs of hinges

Note 2: Top and bottom hinge centerlines shown are used for all non-standard imperial heights